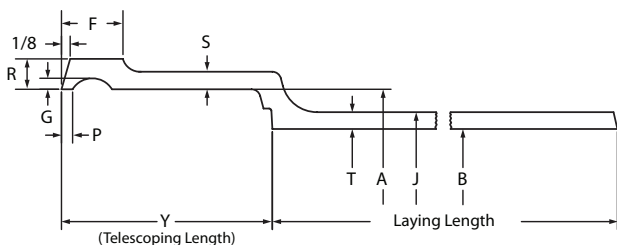


Service



PIPE - SERVICE

Size	Telescoping Length	Hub I.D.	Barrel		Nominal Thickness
	Y	A	O.D. J	I.D. B	T
2"	2.50	2.94	2.30	1.96	0.17
3"	2.75	3.94	3.30	2.96	0.17
4"	3.00	4.94	4.30	3.94	0.18
5"	3.00	5.94	5.30	4.94	0.18
6"	3.00	6.94	6.30	5.94	0.18
8"	3.50	9.25	8.38	7.94	0.23
10"	3.50	11.38	10.50	9.94	0.28
12"	4.24	13.50	12.50	11.94	0.28
15"	4.25	16.95	15.88	15.16	0.36

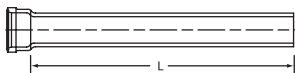
PART NO. SV 1



Pipe, 5' Lengths, Single Hub

Size	L	Weight
2" x 5'	5'	22.5
3" x 5'	5'	31.8
4" x 5'	5'	41.0
5" x 5'	5'	52.5
6" x 5'	5'	69.2
8" x 5'	5'	101.0
10" x 5'	5'	150.9
12" x 5'	5'	185.7
15" x 5'	5'	287.5

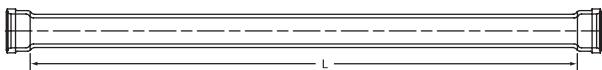
PART NO. SV 1A



Pipe, 30" Lengths, Single Hub

Size	L	Weight
8" x 30"	30"	58.7
10" x 30"	30"	91.7
12" x 30"	30"	107.1
15" x 30"	30"	166.3

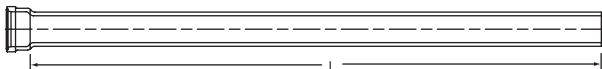
PART NO. SV 2



Pipe, 5' Lengths, Double Hub

Size	L	Weight
2" x 5'	4' 9 1/2"	21.1
3" x 5'	4' 9 1/4"	31.9
4" x 5'	4' 9"	42.5
5" x 5'	4' 9"	57.2
6" x 5'	4' 9"	69.5

PART NO. SV 3



Pipe, 10' Lengths, Single Hub

Size	L	Weight
2" x 10'	10'	40.1
3" x 10'	10'	59.5
4" x 10'	10'	75.1
5" x 10'	10'	100.4
6" x 10'	10'	122.8
8" x 10'	10'	180.5
10" x 10'	10'	259.7
12" x 10'	10'	345.9
15" x 10'	10'	525.1