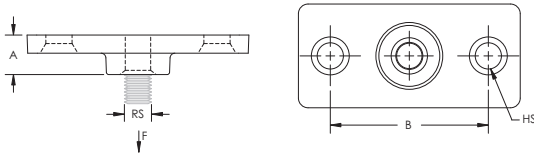


# 365M Malleable Iron Wall or Ceiling Plate – 365M0037EG



- Structural attachment to support hanger rod from a ceiling or a wall



|                             |                   |
|-----------------------------|-------------------|
| Part Number                 | 365M0037EG        |
| Material                    | Cast Iron         |
| Finish                      | Electrogalvanized |
| Rod Size (RS)               | 3/8"              |
| Hole Size (HS)              | 1/4"              |
| A                           | 15/32"            |
| B                           | 1 15/16"          |
| Pipe Size                   | 2" Max            |
| Static Load (F)             | 180 lb            |
| Standard Packaging Quantity | 100 pc            |
| UPC                         | 78285636477       |

Follow fastener manufacturer's recommended shear and pull-out strength when fastening to the structure. Fastener not included.

## WARNING

Pentair products shall be installed and used only as indicated in Pentair's product instruction sheets and training materials. Instruction sheets are available at [erico.pentair.com](http://erico.pentair.com) and from your Pentair customer service representative. Improper installation, misuse, misapplication or other failure to completely follow Pentair's instructions and warnings may cause product malfunction, property damage, serious bodily injury and death and/or void your warranty.

© 2016 Pentair All rights reserved

Pentair, CADDY, CADWELD, CRITEC, ERICO, ERIFLEX, ERITECH and LENTON are owned by Pentair or its global affiliates.

All other trademarks are the property of their respective owners. Pentair reserves the right to change specifications without prior notice.

